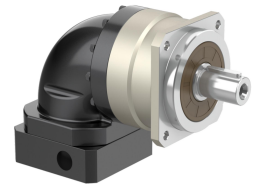


# Right Angle Planetary Helical Gearbox

## Square/Round/Flange Frame Type

Specification	Unit	Stage	Ratio	RPHS060	RPHS090	RPHS115	RPHS140	RPHS180
				RPHR070	RPHR090	RPHR120	RPHR155	RPHR205
				RPHF064	RPHF090	RPHF110	RPHF140	RPHF200
Rated output torque $T_{2N}$	Nm	1	3	55	130	208	342	588
			4	50	140	290	540	1050
			5	60	160	330	650	1200
			6	55	150	310	600	1100
			7	50	140	300	550	1100
			8	50	140	290	542	1050
			10	60	160	330	650	1200
			12	55	150	310	600	1100
			14	50	140	300	550	1100
			20	40	100	230	450	900
		2	15	55	130	208	342	588
			25	60	160	330	650	1200
			30	55	150	310	600	1100
			35	50	140	300	550	1100
			40	50	140	290	542	1050
			50	60	160	230	650	1200
			60	55	150	310	600	1100
			70	50	140	300	550	1100
			80	50	140	290	542	1050
			100	60	160	330	650	1200
120	55	150	310	600	1100			
140	50	140	300	550	1100			
160	45	120	260	500	1000			
200	40	100	230	450	900			
Emergency stop torque $T_{2NOT}$	Nm	1,2	3-200	Triple rated output torque				
Rated input speed $\eta 1N$	rpm	1,2	3-200	5000	4000	4000	3000	3000
Maximum input speed $\eta 1B$	rpm	1,2	3-200	10000	8000	8000	6000	6000
Standard backlash P1	arcmin	1	3-20	$\leq 3$	$\leq 3$	$\leq 3$	$\leq 3$	$\leq 3$
		2	15-200	$\leq 5$	$\leq 5$	$\leq 5$	$\leq 5$	$\leq 5$
Standard backlash P2	arcmin	1	3-20	$\leq 7$	$\leq 7$	$\leq 7$	$\leq 7$	$\leq 7$
		2	15-200	$\leq 10$	$\leq 10$	$\leq 10$	$\leq 10$	$\leq 10$
Torsional rigidity	Nm/arcmin	1,2	3-200	7	14	25	50	145
Allowable radial force $F_{2aB}$	N	1,2	3-200	1530	3250	6700	9400	14500
Allowable axial force $F_{2aB}$	N	1,2	3-200	765	1625	3350	4700	7250
Lifespan	hr	1,2	3-200	20000*				
Efficiency	%		3-20	$\geq 95\%$				
		2	25-200	$\geq 92\%$				
Weight			3-20	2.1	6.4	13	24.5	51
	Rg	2	25-200	1.5	7.8	14.2	27.5	54
Working temperature	$^{\circ}C$	1,2	3-200	(-10 $^{\circ}C$ +90 $^{\circ}C$ )				
Lubricating				Synthetic lubricating grease				
IP Grade		1,2	3-200	IP65				
Installation direction		1,2	3-200	In any direction				
Noise level ( $\eta 1=3000rpm, off load$ )	dB(A)	1,2	3-200	$\leq 63$	$\leq 65$	$\leq 68$	$\leq 70$	$\leq 72$



RPHS



RPHR



RPHF